

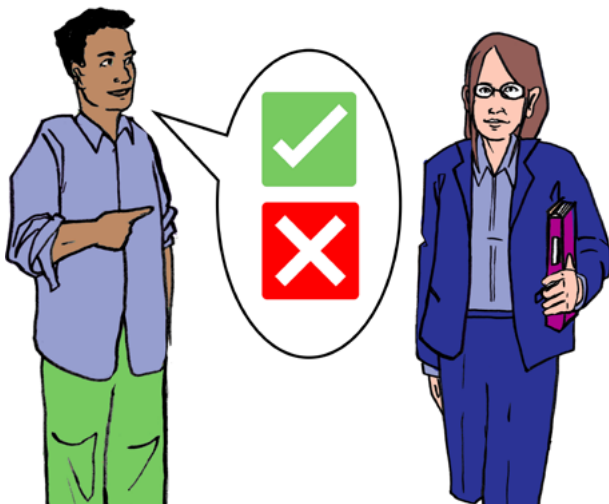
Feedback tool for autistic adults and their families

Easy Read Toolkits

Introduction



The Capabilities Statement for social work with autistic adults talks about the important things social workers need to be able to do to support autistic adults well.



This tool has been made for autistic adults to tell their social work teams if social workers have worked well for them or not.



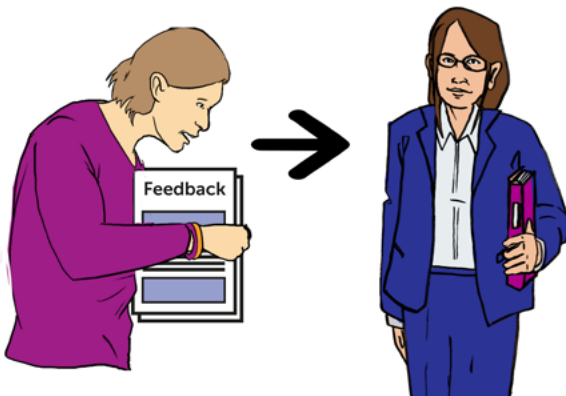
You can download or print a copy of this form to fill in.



You should not let someone else fill it in for you, your carer or your family member, but you can use support to help you write if you need to.



This is so it says what you really think about using social work services.



When you have finished filling in this form you should give it back to the social work team.



[Click here to read the capabilities statement and the easy read version of the statement.](#)

How the tool works



This feedback tool has three sections. These are:



Purpose: What social work is for



Practice: How social workers should carry out their job



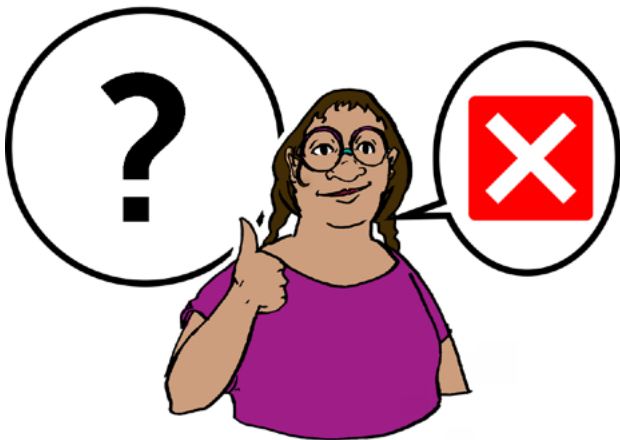
Impact: The difference that social workers make

1 2 3

Each section has a different colour.



There are 14 questions.



You do not have to answer any of these questions you do not want to.



You do not need to give your name unless you would like your social worker or their manager to see this feedback.

Feedback tool for autistic adults and their families

Easy Read Toolkits

Feedback Form

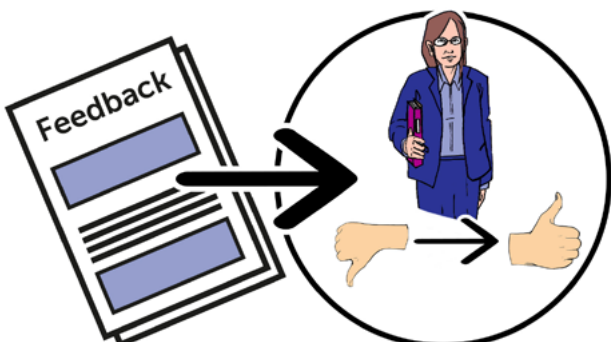


If you want the manager to know about what you have written in your feedback, tick this box and write the name of the social work team in the space below.

Why are we asking for this information?



To find out about what you think about social workers and how they have worked with you.



This is to make services for autistic adults better.



Answering these questions will help social workers to:



- think about the way they are working



- understand what autistic people and their families think about the support they give autistic people



- find out what they need to do differently

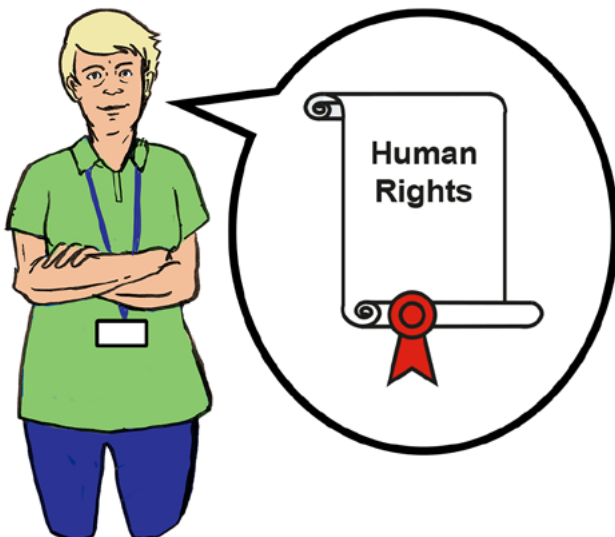


- understand what they need to learn to give better support

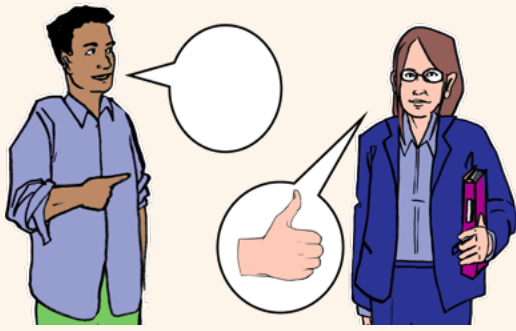


- learn from the Capabilities Statement for social workers to become better at supporting autistic people

Part 1 – Purpose



The Purpose section says how social workers should think about what is right and wrong and how they should deal with peoples' rights.



1 Did you feel listened to and understood by your social worker? This could be the social worker understanding your life, what is important to you, what you like or what problems you have



1



2



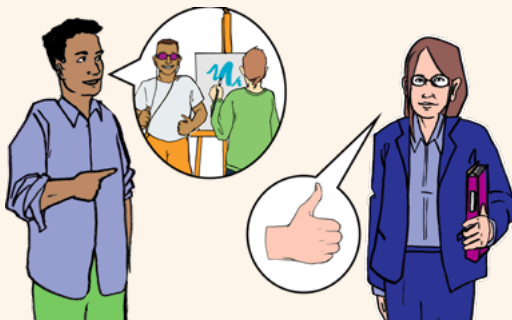
3

4



5

If you have anything else you want to say about this, please write it below



2 Did your social worker find out from you about the things you like or enjoy?

Yes

No

Please write what you would like them to do differently below

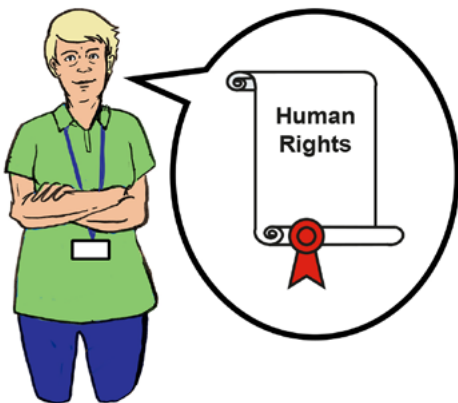


3 Did your social worker talk about what makes it hard to do things you like or enjoy?

Yes

No

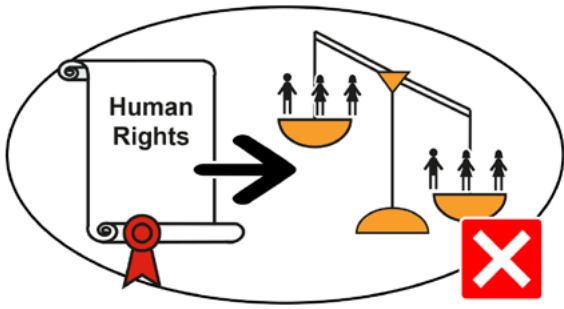
Please write what you would like them to do differently below



4 Did the social worker explain to you what your rights are?



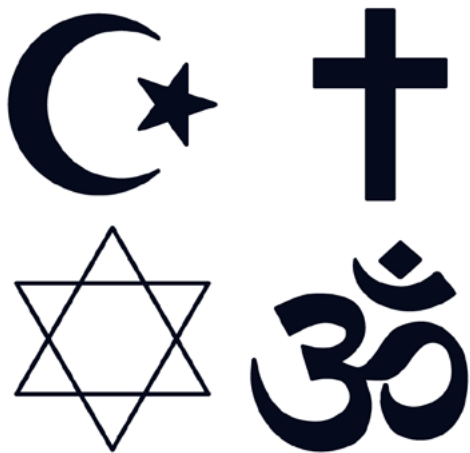
A right is something you do or have that no one should take away. This includes being treated fairly and with dignity. The Government and all public services must respect your rights.



Your rights include not being treated unfairly because of:



- your race



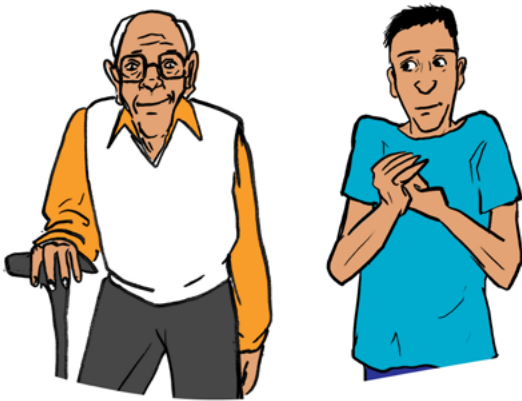
- your religion



- whether you are a man or woman



- whether you are straight or gay



- your age



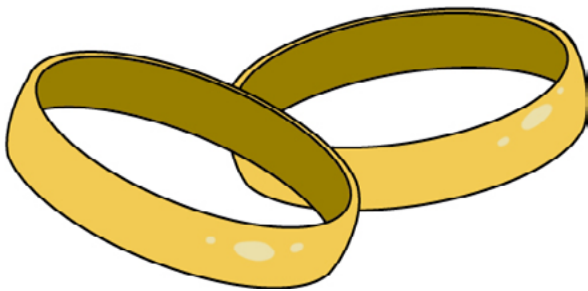
- your political views



- if you are disabled



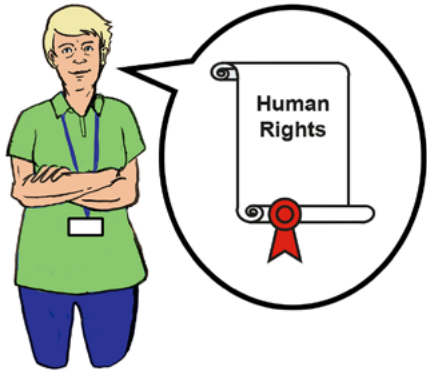
- if you are transgender



- if you are married or not



- if you are pregnant



4 Did the social worker explain to you what your rights are?



Right to an assessment of your needs that asks about your autism and how it affects you.



Right for that assessment to be done by someone with the skills, understanding and knowledge of autism do that assessment well



Right to an independent advocate if you need one. An advocate is someone on your side outside of your family



Right to private and family life, your home, your letters and emails.



Right to freedom and safety



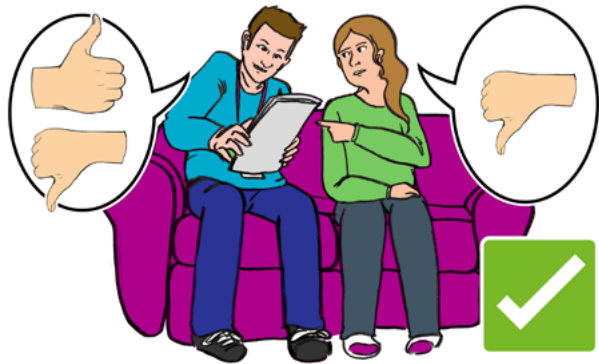
Right to not to be abused



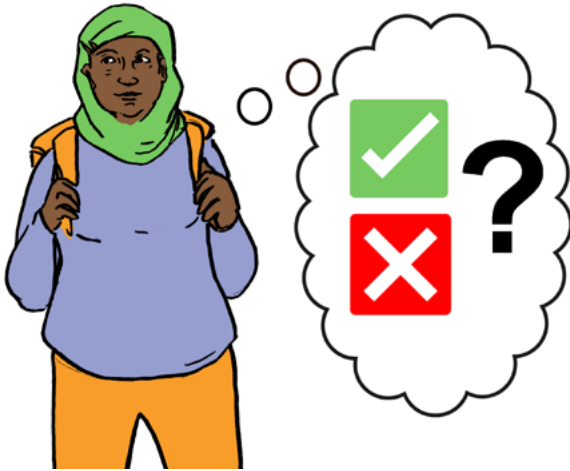
Right to have your voice heard, be involved and understood



Right to complain



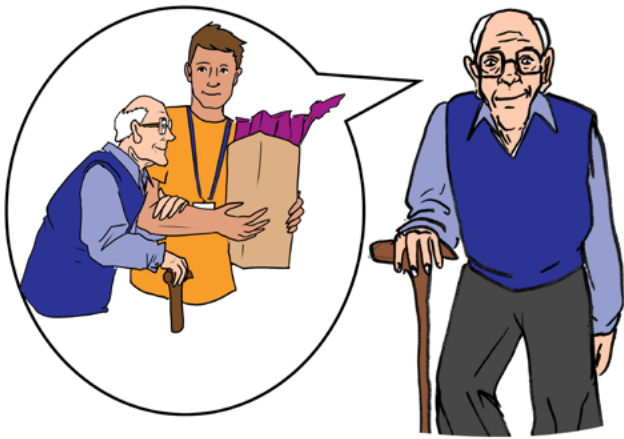
5 How did the social worker support you with making decisions?



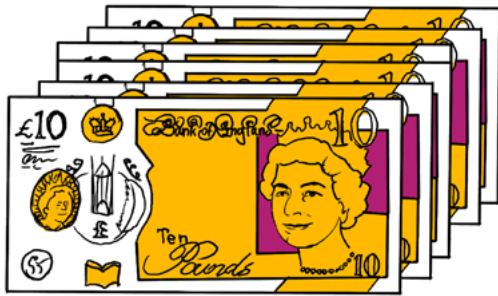
These could be decisions about:



● Where you live



- Support you need



- Managing your money



- Parenting



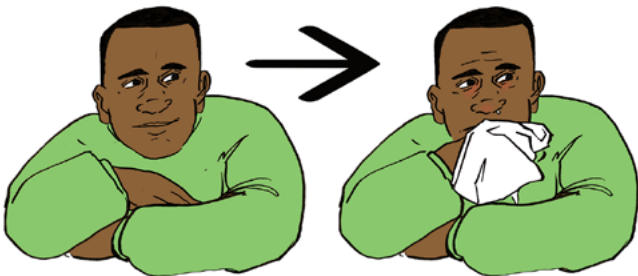
- Meeting other people



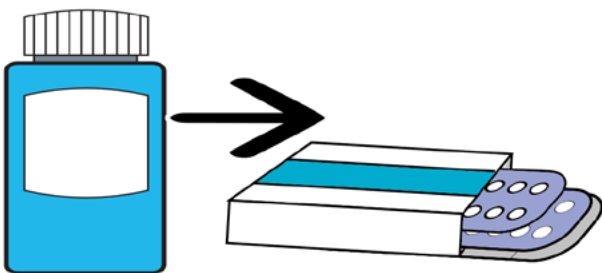
- Work



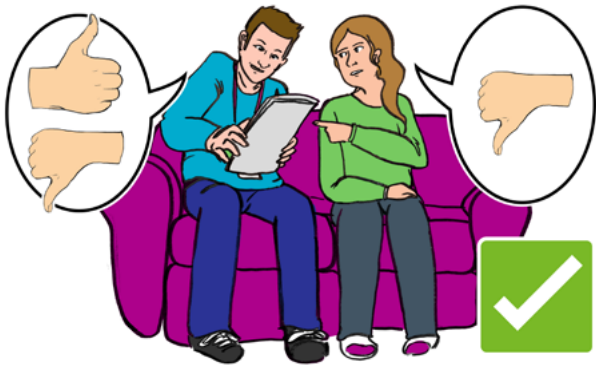
- Activities you enjoy doing



- Changes in your health



- Changes in your medication



Tick the boxes next to things the social worker did to help you make decisions



Asking you to tell them what you needed to make a decision



Gave you information in a way that was easy for you to understand



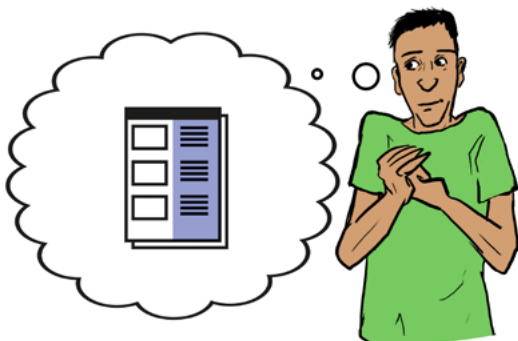
Wrote questions down



Used pictures or symbols to help you make the decision



Brought in an advocate or someone else you trust



Gave you time to think about information



Listened to you



Asked you questions that helped you to make a decision

Please write any other ways they helped you make a decision below



6 Did the social worker explain how to get the support you should have?



1

2

3

4

5

If you have anything else you want to say about this, please write it below

Part 2 – Practice



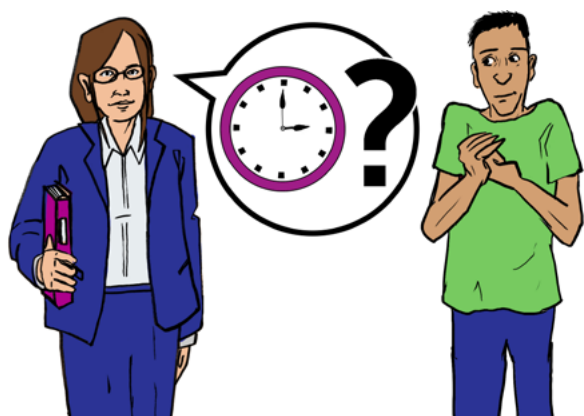
The practice section describes what social workers need to know and be able to do when working with autistic adults.



1

What does your social worker do before they visit you?

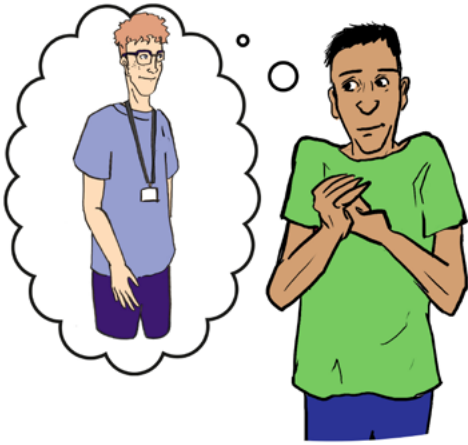
Tick the boxes next to all of things that they do



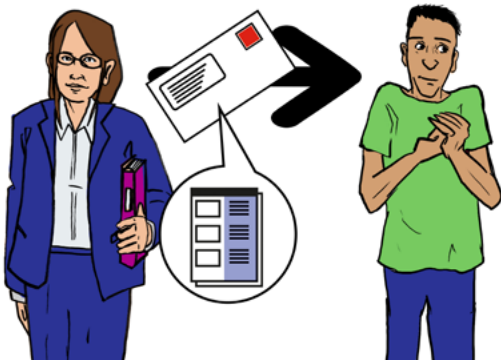
They ask you first to check a good time to visit



They know how you like to be contacted, like by telephone, email or text



You always know who is coming to visit and if the social worker is coming alone or with someone else



They send you information before the visit



They bring information with them



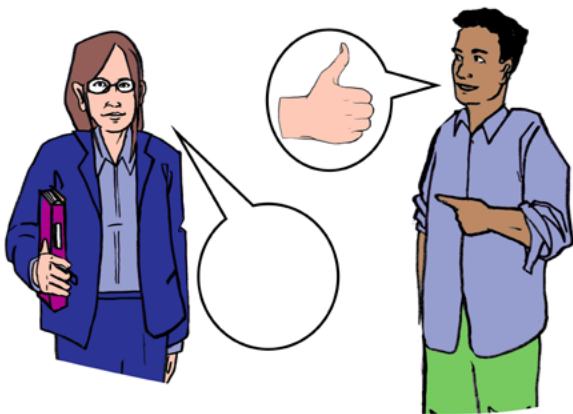
They arrive on time for the visit



They give you plenty of time for the visit



They know how to talk to you if you are worried



They explain things in a way you can understand



They check on the day if it is still ok to visit



Asked you questions that helped you to make a decision

If you have anything else you want to say about this, please write it below



2 Does your social worker take time to find out the best way to communicate with you?

Yes

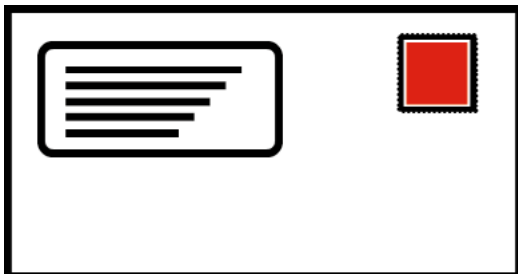
No



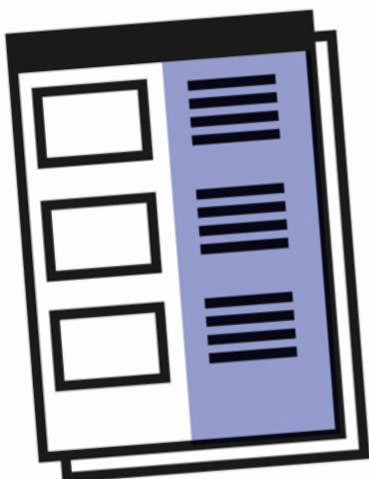
Click the ways you like to use to communicate and get information from your social worker.



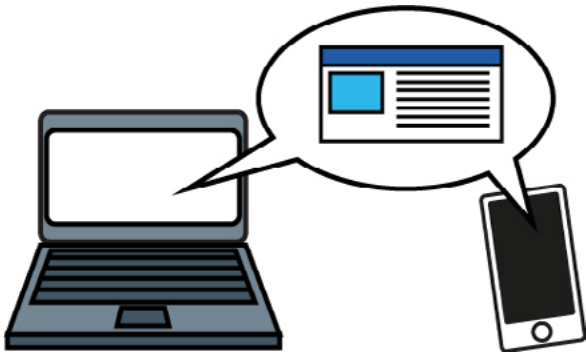
Talking to you in person



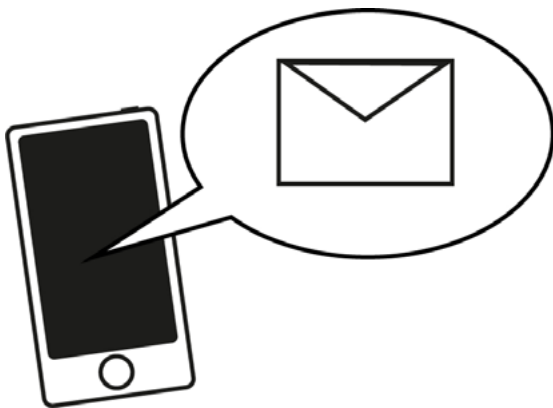
Letter



Easy read information



Online information. This could be on your phone, computer or tablet.



Email



Text Message



WhatsApp



Messenger



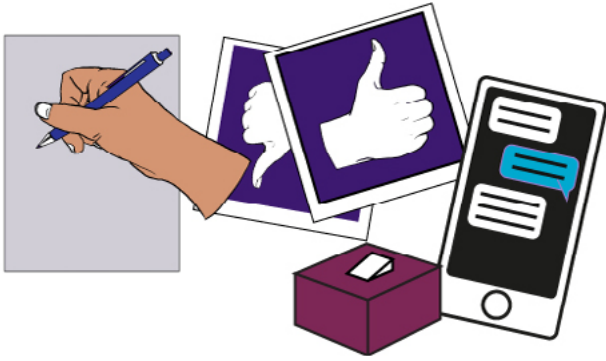
Facetime



Skype



Zoom



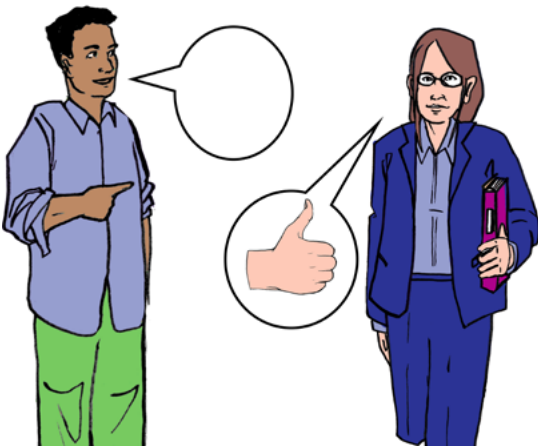
Other ways to communicate



3

How does your social worker make sure they are working well with you?

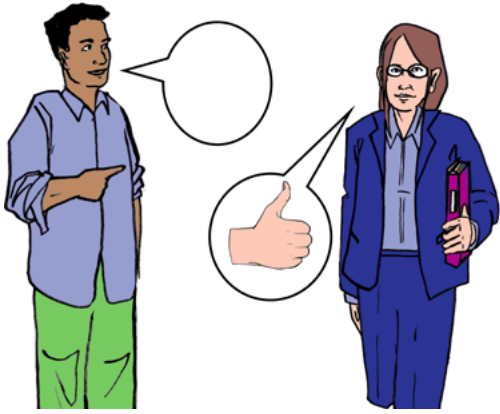
Tick the boxes next to the things they have done



Listens to you



Has got to know you



Understands you



Does not make assumptions about you



Knows what is important to you



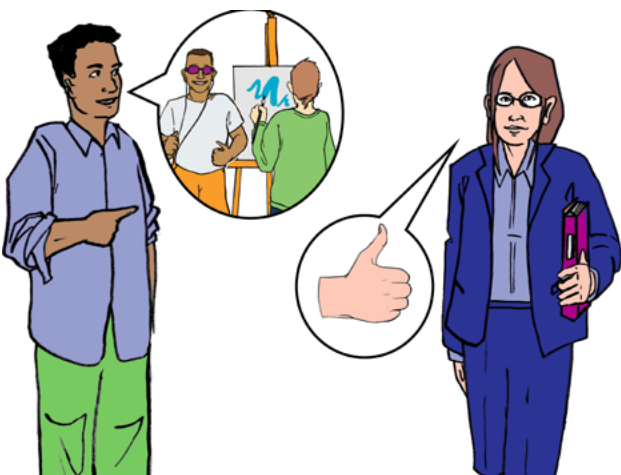
Knows what the triggers are for you. Triggers are things that can make you worried, upset or angry.



Understands how you like to communicate



Understands your sensory needs



Knows what you are good at



Knows what you find difficult



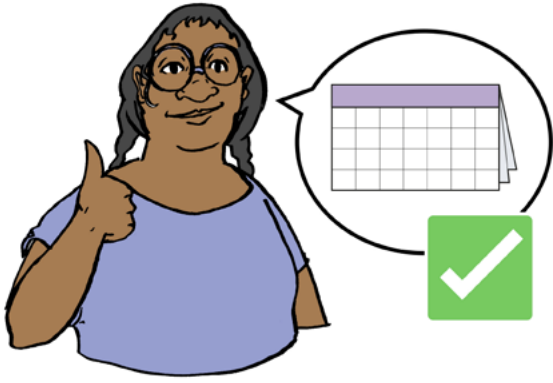
Respects you



Understands how autism affects you



Supports you to have your say



Understands your routines and fits in with them



Doesn't judge you



4 Do you feel able to tell your social worker something is not working for you?

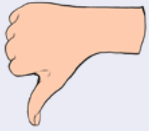
Yes

No

If not, please write what they could do differently below



5 If you have a care plan, how well did your social worker involve you with this?



1

2

3

4

5

If you have anything else you want to say about this,
please write it below



Yes

6 Has your social worker supported you to make a crisis care plan?

This is a plan that you make that can be used to support you when you are feeling very worried or are in serious trouble.

No

If not, please write what they could do differently below

Section 3 – Impact



Impact is about being a good leader and working with other organisations.



1 Do you feel that your social worker would speak up about things for you?

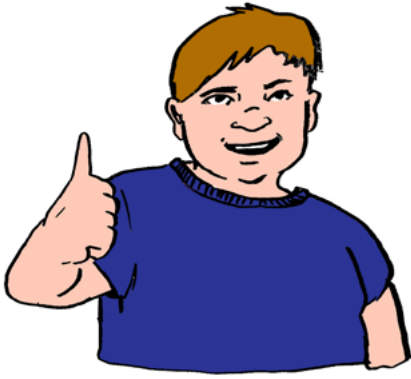
This might be information about you that isn't correct, if they feel you are being treated unfairly or being told you can't use support or services

Yes

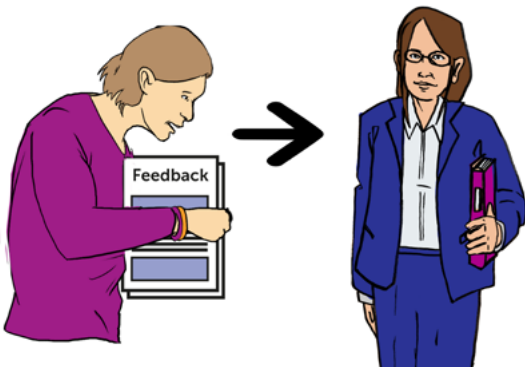
No

Please write more about this below

If there is anything more you want say, please write it below



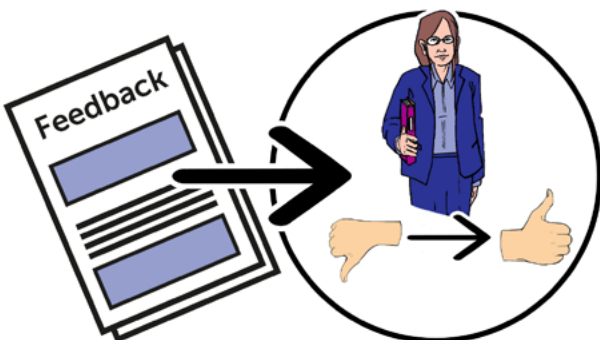
Thank you for sharing your thoughts about what has happened.



Please can you give the form to your social worker when they visit



Or send the form to your social work team.



This information will be used to make social work better for autistic adults.